

Release notes

Windows Platforms

KiasTek SAS,
31 Avenue Jean Francois Champollion
31100 Toulouse France
<http://www.kiastek.com>
<mailto:support@kiastek.com>

What's new

- CosiMate updates:
 - Control of network co-simulations improvements:
 - ✓ Pause mode enabled.
 - ✓ Integration with the User Interface control.
 - ✓ Better control when co-simulation ends from a local or a remote simulator.
 - Graphical User Interface corrections:
 - ✓ Connection with the router improved
 - ✓ Corrections on graphical functions
 - ✓ Better control of the model properties

- IXD Editor
 - Corrections: control of the CosiMate user interface, close function, etc...

- Coupling updates :
 - FMI
 - ✓ Support of the version: 2.0 RC1.
 - Matlab/Simulink
 - ✓ Support of the version: 2014a.
 - ✓ Accelerator mode supported for co-simulation runs and IXD generation
 - ✓ Better management of models paths
 - ✓ Connector corrections
 - Saber / Saber HDL / SaberRD Interfaces
 - ✓ Support of the version: 2013.12.
 - ✓ IXD generation supported for models including multiple pages.
 - ✓ Corrections on IXD generation.
 - Imagine.Lab AMESim
 - ✓ Support of the version: Rev13.
 - ✓ Coupling correction: better management of the end of an AMESim simulation to avoid unexpected stop of AMESim executables.
 - Adams
 - ✓ Support of the version: 2013.2.
 - ✓ Better management of IXD files.
 - ✓ Introduction of 2 new parameters for a better management of the solvers:

- *AdamsControlsWaitTime*: Option used to set the wait time to connect with the Adams solver (scontrols.exe or vcontrols.exe processes). The value is a time in seconds. The option overwrites the environment variable ADAMS_CONTROLS_WTIME.
- *AdamsConnectionType*: Option used to set the connection type to exchange with the Adams solver. Use 1 for a Pipe connection, or 2 for a TCP/IP connection.

Note: Based on our experience the Pipe connection is faster but less reliable than a TCP/IP connection. With a Pipe connection we might encounter unexpected behaviors of the Adams solver (scontrols.exe or vcontrols.exe processes).

- PSIM
 - ✓ Correction: Coupling initialization for multiple runs.
- Easy5
 - ✓ Support of the version: 2013.
- EMTP-RV
 - ✓ Support of the version: 2.5.
- GT-Power
 - ✓ Support of the version: 7.4.

- New interfaces:
 - CarSim from Mechanical Simulation
 - ✓ Supports versions 8.2.x.

Import channels/variables : CosiMate input ports

Name	Mode	Initial Value
1 IMP_M_OUT_TR	Add	0.0
2 IMP_AV_TC	Add	0.0

Output channels/variables : CosiMate output ports

Figure 1: Variables to connect on the CosiMate bus.

- NX I-deas TMG from Siemens
 - ✓ Supports version 11.

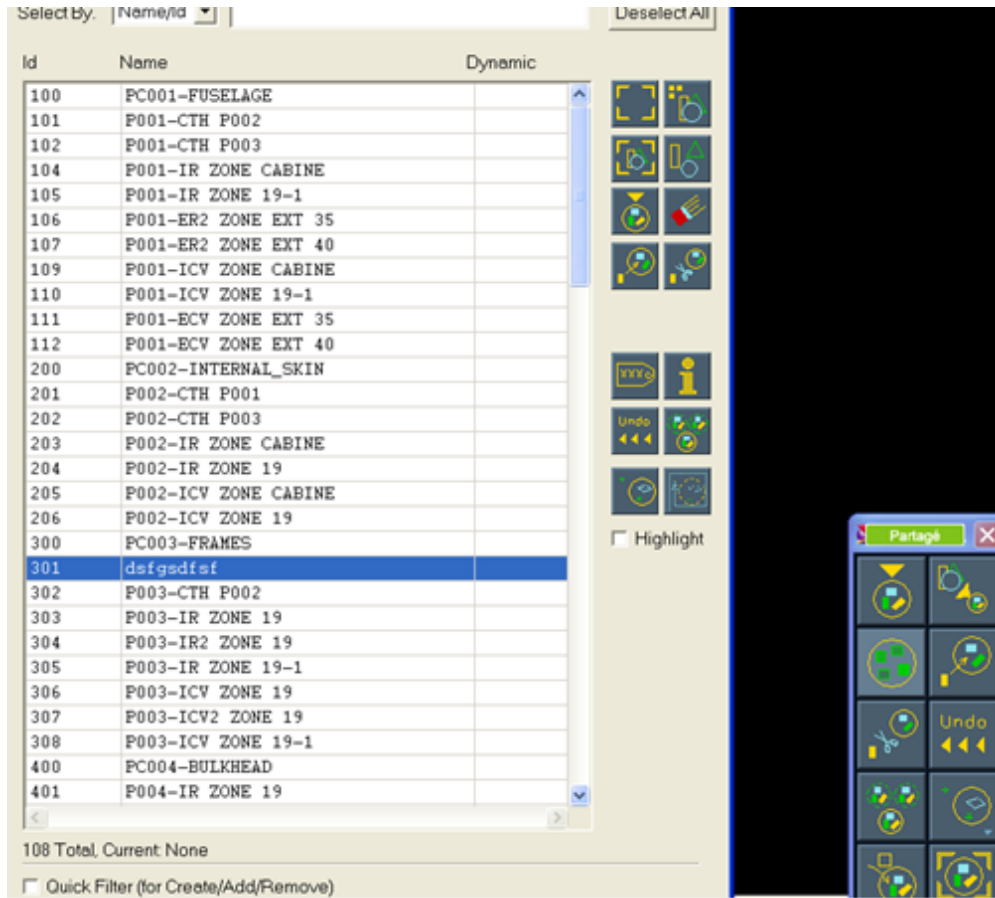


Figure 2: Groups definition.

- List of available interfaces for the release:

Company	Simulator/Language	Windows XP SP2/SP3	Windows Vista SP1/SP2	Windows 7 SP1
The MathWorks	Matlab®/Simulink®	From V7.1 (R14 SP3) to V8.3 (R2014a)	From V7.1 (R14 SP3) to V8.3 (R2014a)	From V7.1 (R14 SP3) to V8.3 (R2014a)
Synopsys	Saber® HDL	From 2010.09 to 2013.12	From 2010.09 to 2013.12	From 2010.09 to 2013.12
Synopsys	SaberRD®	From 2010.09 to 2013.12	From 2010.09 to 2013.12	From 2010.09 to 2013.12
Synopsys	Saber® Designer	From 2003.6 to 2013.12	From 2003.6 to 2013.12	From 2003.6 to 2013.12
LMS International	Imagine.Lab AMESim®	From 4.3 to Rev 13	From 4.3 to Rev 13	From 4.3 to Rev 13

Company	Simulator/Language	Windows XP SP2/SP3	Windows Vista SP1/SP2	Windows 7 SP1
LMS International	Virtual.Lab Motion	From Rev11 SL1 to Rev12	From Rev11 SL1 to Rev12	From Rev11 SL1 to Rev12
Powersys	EMTP-RV®	From 2.2.x to 2.5	From 2.2.x to 2.5	From 2.2.x to 2.5
MSC Software	Adams®	From 2008 to 2013.2	From 2008 to 2013.2	From 2008 to 2013.2
MSC Software	Easy5®	From 2005 r1 to 2013	From 2005 r1 to 2013	From 2005 r1 to 2013
IBM Rational	Statemate®	From 4.1 to 4.6.1	From 4.1 to 4.6.1	From 4.1 to 4.6.1
IBM Rational	Rhapsody® Developer C++ Edition	From 7.5.x to 8.0	From 7.5.x to 8.0	From 7.5.x to 8.0
Engineering Center Steyr	Kuli	From 8.0 to 9.0	From 8.0 to 9.0	From 8.0 to 9.0
Dassault Systèmes	Dymola	From 2012 to 2014	From 2012 to 2014	From 2012 to 2014
-	OpenModelica	From 1.8.1 to 1.9.0	From 1.8.1 to 1.9.0	From 1.8.1 to 1.9.0
Mentor Graphics	Modelsim® SE	From 6.1f	From 6.1f	From 6.1f
Gamma Technologies	GT-Power®	From 6.2 to 7.4	From 6.2 to 7.4	From 6.2 to 7.4
Autodesk	Inventor® Dynamic Simulation	From 2013 to 2014	From 2013 to 2014	From 2013 to 2014
Powersim	PSIM®	From 9.2 to 9.3	From 9.2 to 9.3	From 9.2 to 9.3
Mechanical Simulation	CarSim	8.2.x	8.2.x	8.2.x
Siemens	NX I-deas TMG	11	11	11
-	FMI for Co-simulation and Model-exchange	From 1.0 to 2.0 (RC1)	From 1.0 to 2.0 (RC1)	From 1.0 to 2.0 (RC1)
Microsoft	Visual C/C++	From 6.0 to 11.0 (VS 2012)	From 6.0 to 11.0 (VS 2012)	From 6.0 to 11.0 (VS 2012)
-	C/C++ (gcc)	All	All	All
Oracle Corporation	Java	From Java SE 7	From Java SE 7	From Java SE 7

Important Notes

To use SaberRD® with CosiMate, do not configure (using the CosiMate Tools Configuration utility) the Saber® HDL interface.

Known issues and limitations

For known issues and limitations please contact the KiasTek support at <http://support.kiastek.com/>.

Resolved issue

For more details concerning an issue, please contact the KiasTek support at <http://support.kiastek.com/>.

Supported platforms

CosiMate is a software product available on Windows XP SP2/SP3, Windows Vista SP1/SP2 and Windows 7 SP1 operating systems.

CosiMate supports 32-bit and 64-bit Windows platforms.

For other platforms, please ask KiasTek at info@kiastek.com.

Note: Under Windows Vista/7, it is recommended, for performance purposes, to turn off or decrease the sensitivity of the User Account Control (UAC) option.